

(1) FARAK 6Q and IBCUC 6F: remain within 13NM MMP DME during turn on TR224*, until INT RDL/QDR 270 MMP VOR/NDB

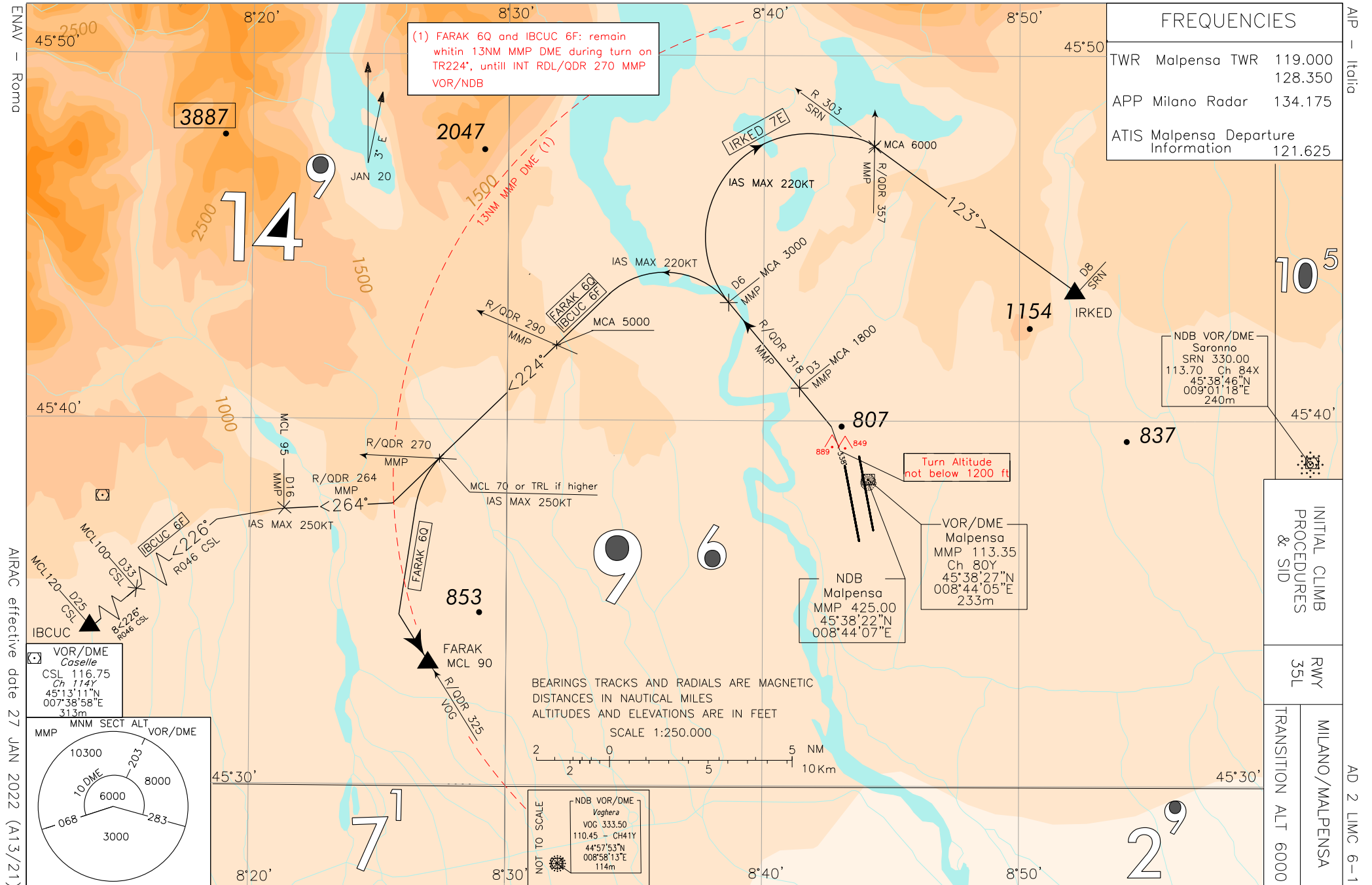
TWR	Malpensa TWR	119.000
		128.350
APP	Milano Radar	134.175
ATIS	Malpensa Departure Information	121.625

RWY
35L

MILANO/MALPENSA
TRANSITION ALT 6000

AD 2 LIMC 6-1

AIP - Italia



NOISE ABATEMENT PROCEDURES RWY 35L

See AD 2 Table 21 “NOISE ABATEMENT PROCEDURES”

INITIAL CLIMB PROCEDURES RWY 35L

If cleared via SID IBCUC 6F, FARAK 6Q and IRKED 7E, after take-off proceed on TR 338°. Not below 1200 ft turn left to join the assigned SID

REMARK

For FARAK 6Q and IRKED 7E Minimum climb gradient 7.5% (456 ft/NM) until passing 6000 ft
For IBCUC 6F Minimum climb gradient 7.5% (456 ft/NM) until passing FL95

WARNING

There are close-in obstacles penetrating OIS 2.5%

SID DESCRIPTION RWY 35L

Initial climb procedure executed:

IBCUC 6F

Join RDL 318 MMP VOR (QDR 318° MMP NDB) till point RDL/QDR 318/6 NM MMP VOR NDB/DME, then turn left (IAS MAX 220KT) on TR224° to join and follow RDL 264 MMP VOR (QDR 264° MMP NDB). At 16NM MMP DME turn left to intercept and follow RDL 046 CSL VOR (TR 226°) bound to IBCUC (RDL 046/25NM CSL VOR/DME).

REMARK

Remain within 13NM MMP DME during the turn on TR 224°, until INT RDL/QDR 270 MMP VOR/NDB.

MCA/MCL: RDL/QDR 318/3 NM MMP VOR NDB/DME, 1800 FT; RDL/QDR 318/6 NM MMP VOR NDB/DME, 3000 FT;
INT TR 224° / RDL/QDR 290 MMP VOR/NDB, 5000FT; INT TR 224° / RDL/QDR 270 MMP VOR/NDB, FL 70 or TRL if higher;
RDL/QDR 264/16NM MMP VOR NDB/DME, FL95; RDL 046/33 NM CSL VOR/DME, FL100; IBCUC, FL 120.

IRKED 7E

Join RDL 318 MMP VOR (QDR 318° MMP NDB) till point RDL 318/6 NM MMP VOR NDB/DME, then turn right (IAS MAX 220KT) to join and follow RDL 303 SRN VOR (TR 123°) bound to IRKED (RDL 303/8NM SRN VOR/DME).

MCA/MCL: RDL 318/3 NM MMP VOR NDB/DME, 1800 FT; RDL318/6 NM MMP VOR NDB/DME, 3000 FT;
INT RDL 303 SRN VOR and RDL/QDR 357 MMP, 6000FT

FARAK 6Q

Join RDL 318 MMP VOR (QDR 318° MMP NDB) till point RDL/QDR 318/6 NM MMP VOR NDB/DME, then turn left (IAS MAX 220KT) on TR224°. At INT TR 224° / RDL/QDR 270 MMP VOR/NDB turn left (IAS MAX 250KT) to join RDL/QDR 325 VOG VOR/NDB bound to FARAK (RDL/QDR 325/42 NM VOG VOR NDB/DME).

REMARK

Remain within 13NM MMP DME during the turn on TR 224°, until INT RDL/QDR 270 MMP VOR/NDB.

MCA/MCL: RDL/QDR 318/3 NM MMP VOR NDB/DME, 1800 FT; RDL/QDR 318/6 NM MMP VOR NDB/DME, 3000 FT;
INT TR 224° / RDL/QDR 290 MMP VOR/NDB, 5000FT; INT TR 224° / RDL/QDR 270 MMP VOR/NDB, FL 70 or TRL if higher;
FARAK, FL90.

USE OF AERODROME BY AIRCRAFT CHAPTER 2 ANNEX 16 ICAO.

Aircraft chapter 2 annex 16 ICAO cannot use Malpensa airport, except for emergency.

Intenzionalmente bianca

Intentionally left blank